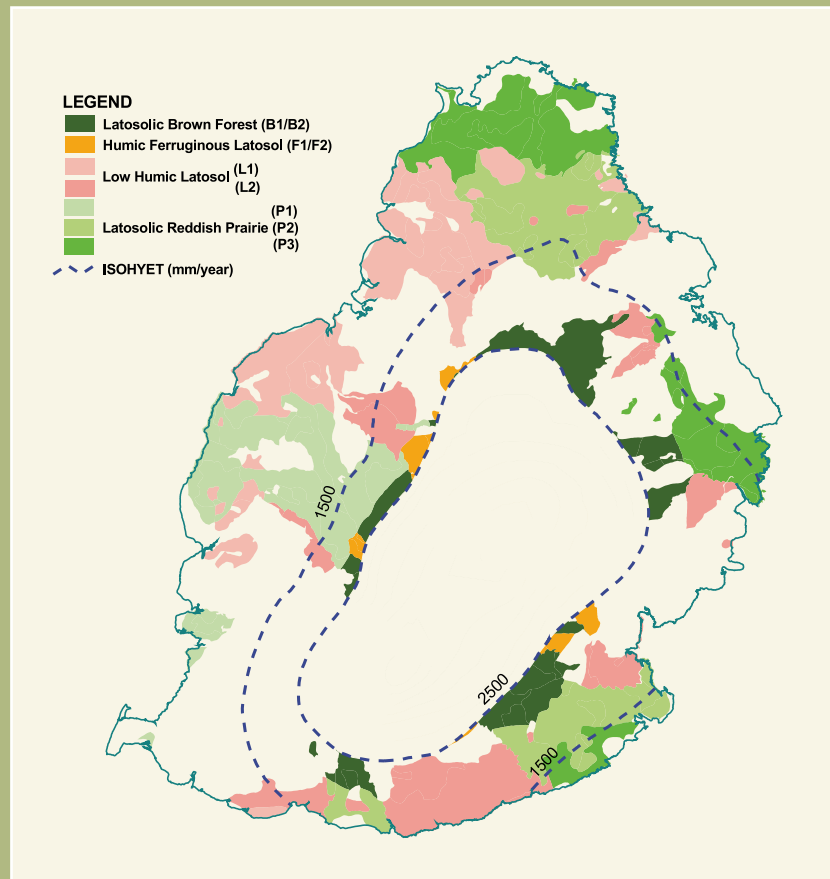
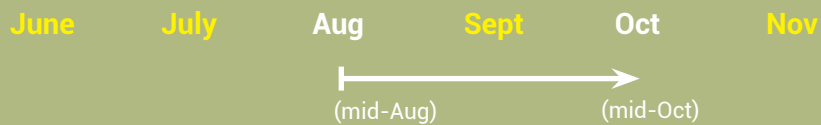


REGIONS where M 1392/00 can be cultivated (provisional)*



Provisional harvest period*



* (refer to the current MSIRI Recommendation Sheets)

MAURITIUS SUGARCANE INDUSTRY RESEARCH INSTITUTE

Réduit, Mauritius • Telephone: +230 454 1061 • Fax: +230 454 1971
E-mail: contact@msiri.mu • Web Site: <http://www.msiri.mu>



MAURITIUS CANE INDUSTRY AUTHORITY
MAURITIUS SUGARCANE INDUSTRY RESEARCH INSTITUTE
Notes on newly-released sugarcane varieties



No. 19
December 2016

M 1392/00



A high-yielding variety with high sucrose content, sugar yield and profitability for the humid and sub-humid zones. Suitable for early-season and middle-season harvests.

Year of release: 2015

GENERAL features

- Growth habit → fairly erect
- Tillering → fairly high
- Stalk number → medium
- Stalk height → fairly tall
- Stalk diameter → fairly large
- Trashing → fairly easy
- Flowering → low
- Germination → average
- Ratooning ability → good
- Ground coverage → medium

DISEASE reaction

- Resistant to gumming, leaf scald, rust and smut
- Susceptible to yellow spot

M 1392/00

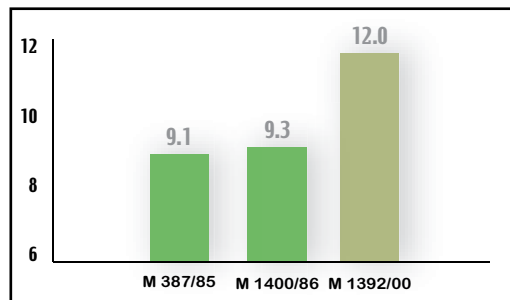
INTERNODES

- Greenish with a yellowish tinge when freshly trashed, purplish with a greenish tinge when exposed to sunlight
- Fairly long
- Fairly large diameter
- Cylindrical, slightly zigzagging
- Medium waxiness
- One to two rows of root primodia
- Wide and slightly bulging olive green growth ring
- Bud groove very short and shallow

RESULTS from trials

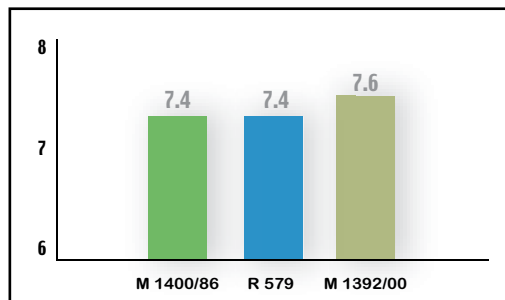
Mean sugar yield (tha⁻¹) at mid-season harvest

Mean of plant cane and 3 ratoons



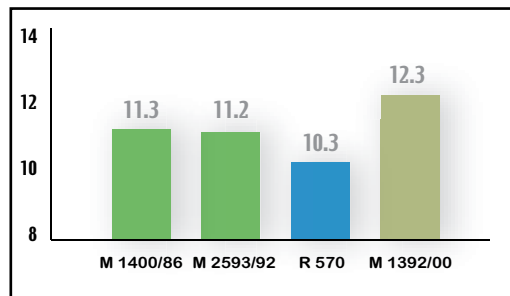
Savannah - B1 soil

Rainfall: 2900 mm - Altitude: 255 m



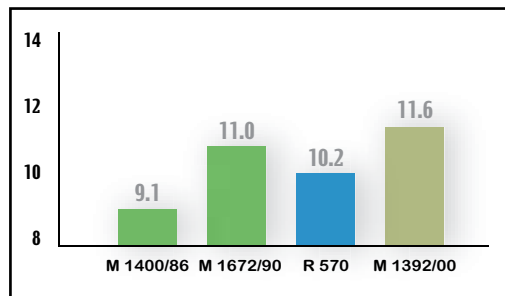
Highlands - F1 soil

Rainfall: 3000 mm - Altitude: 457 m



Mon Loisir - L2 soil (Rainfed)

Rainfall: 1400 mm - Altitude: 80 m



Mon Loisir - P2 soil (Irrigated)

Rainfall: 1300 mm - Altitude: 50 m

LEAVES

- Wide and erect
- Waxy and slightly hairy leaf sheath
- Auricles:
 - Inner: ascending transitional
 - Outer: straight transitional - hairy
- Dewlaps: squarish deltoid

BUDS

- Roundish with flanges widening towards upper half of bud
- Inserted level with leaf scar and ending slightly inside the growth ring

Note: Keys for botanical descriptions, refer to: "Sugarcane Varieties in Mauritius - A Botanical Description" MSIRI (1990), 94p, 37pls.