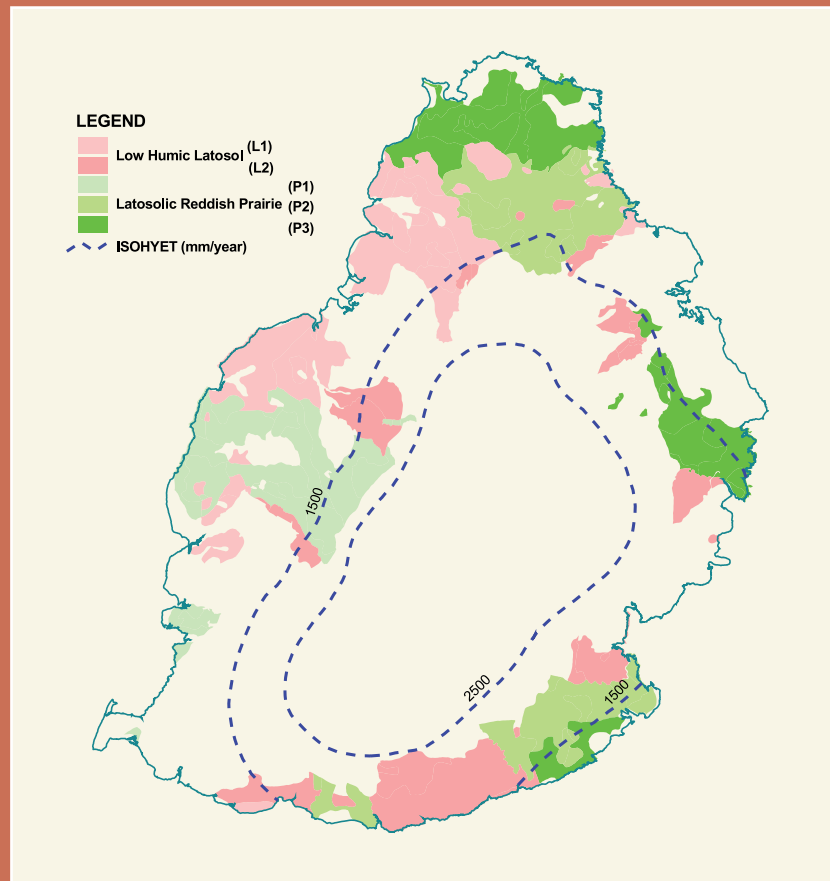
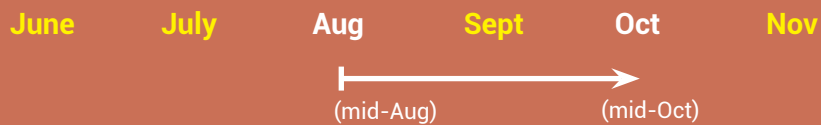


REGIONS where M 1989/99 can be cultivated (provisional)*



Provisional harvest period*



* (refer to the current MSIRI Recommendation Sheets)

MAURITIUS SUGARCANE INDUSTRY RESEARCH INSTITUTE

Réduit, Mauritius • Telephone: +230 454 1061 • Fax: +230 454 1971
E-mail: contact@msiri.mu • Web Site: <http://www.msiri.mu>



MAURITIUS CANE INDUSTRY AUTHORITY
MAURITIUS SUGARCANE INDUSTRY RESEARCH INSTITUTE
Notes on newly-released sugarcane varieties



No. 15
December 2016

M 1989/99



A high-yielding variety with medium sucrose content released for the L and P soils of the humid and sub-humid zones. Suitable for middle-season harvest.

Year of release: 2013



STREAK DESIGNS

GENERAL features

- Growth habit → fairly erect
- Tillering → fairly high
- Stalk number → fairly high
- Stalk height → fairly tall
- Stalk diameter → medium
- Trashing → fairly difficult
- Flowering → low to average
- Germination → good
- Ratooning ability → good
- Ground coverage → good

DISEASE reaction

- Resistant to smut and leaf scald
- Slightly susceptible to gumming
- Susceptible to yellow spot

M 1989/99

INTERNODES

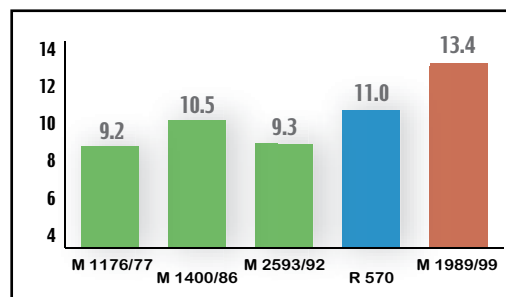
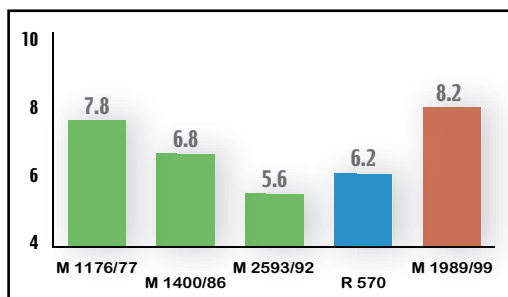
- Yellowish-green when freshly trashed; yellow with a reddish tinge when exposed to sunlight
- Medium in length and diameter
- Conoidal, slightly zigzagging and waxy
- Wax ring fairly large and prominent
- Two rows of root primordia
- Short and shallow bud groove

RESULTS from trials

Mean sugar yield (tha⁻¹) at mid-season and late-season harvests

Mean of plant cane and 3 ratoons

Mid-season harvest



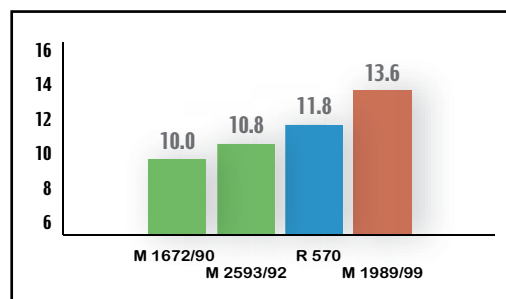
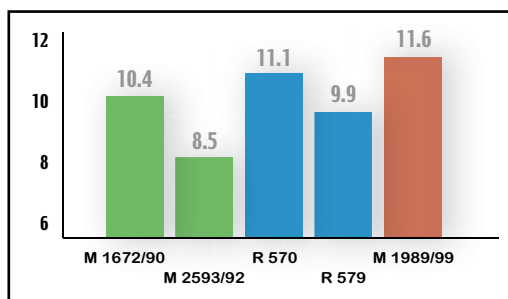
Belle Vue - P3 soil (Rainfed)

Rainfall: 1000 mm - Altitude: 20 m

Cascade - L2 soil (Irrigated)

Rainfall: 2300 mm - Altitude: 215 m

Late-season harvest



Savannah - L2 soil (Irrigated)

Rainfall: 1300 mm - Altitude: 50 m

Mon Loisir - P2 soil (Irrigated)

Rainfall: 1400 mm - Altitude: 40 m

LEAVES

- Green and medium-sized
- Leaf sheath slightly hairy and waxy
- Auricles
 - Inner: broad lanceolate
 - Outer: straight transitional
- Dewlaps: deltoid; olive brown

BUDS

- Medium size
- Oval-shaped; flanges widening towards upper third of bud
- Central germ-pore
- Inserted level with leaf scar and ending below growth ring

Note: Keys for botanical descriptions, refer to: "Sugarcane Varieties in Mauritius - A Botanical Description" MSIRI (1990), 94p, 37pls.