

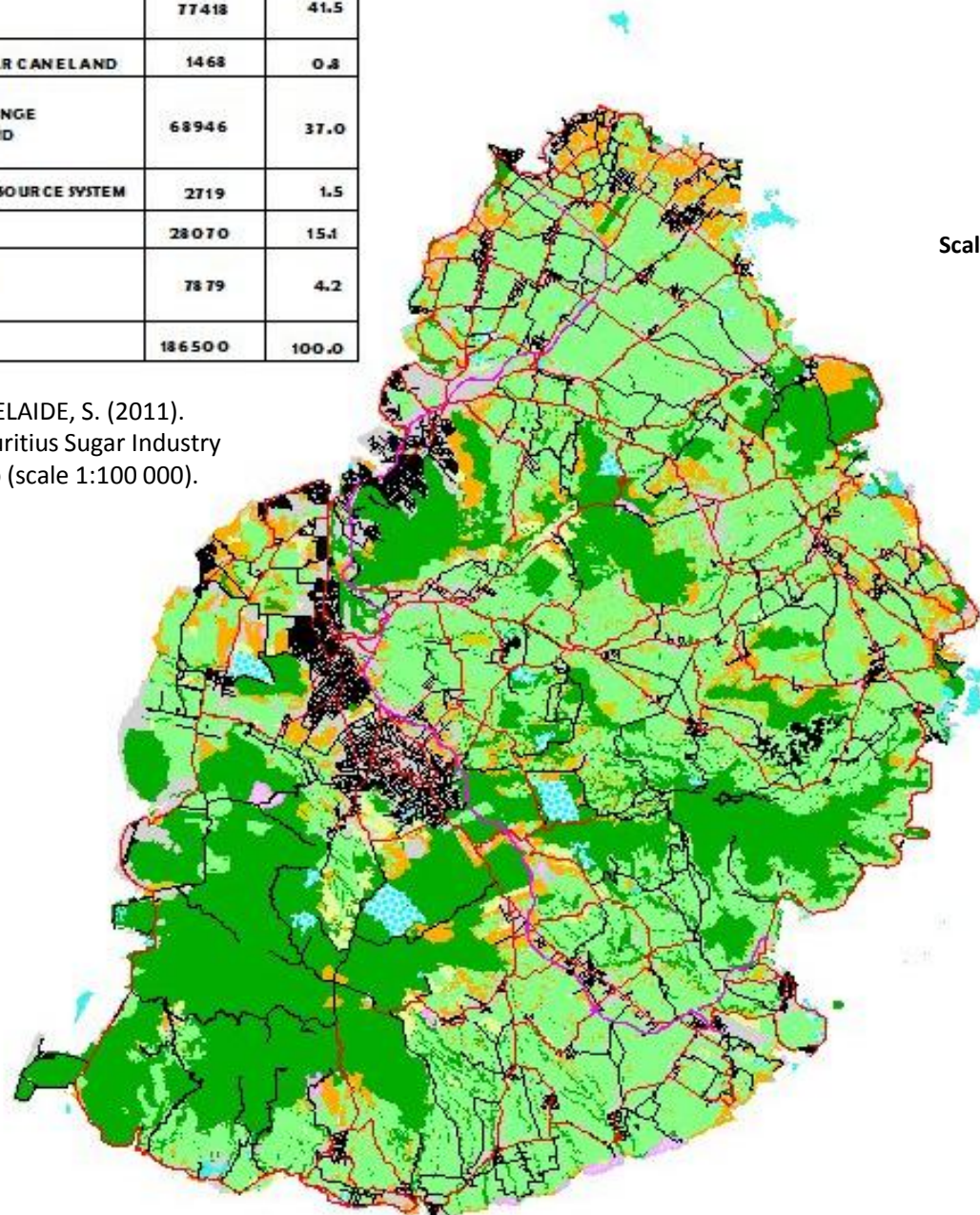
2010 Land use map of Mauritius

LEGEND	MAJOR LAND USE	AREA (Ha)	% TOTAL
SUGAR CANE OTHER CROPS LIVESTOCK PRODUCTION (POULTRY, FODDER)	AGRICULTURE	77 418	41.5
ABANDONED SUGAR CANE LAND	ABANDONED SUGAR CANE LAND	14 68	0.8
RESERVES (MOUNTAIN & RIVER)	FOREST, SHRUB, RANGE AND GRAZING LAND	68 946	37.0
WASTE LAND			
ROCK HEAP			
LEISURE (BEACH, PUBLIC GARDEN, ETC)			
WATER BODY & MARSH	INLAND WATER RESOURCE SYSTEM	2 719	1.5
BUILT-UP AREA	BUILT-UP AREA	28 070	15.1
HIGHWAY	INFRASTRUCTURE	78 79	4.2
MAIN ROAD			
SECONDARY ROAD/PIVOT PARKING			
TOTAL AREA (Ha)		186 500	100.0

Source:

CHUNG TZE CHEONG, M., RAMASAMY, S. and ADELAIDE, S. (2011).
The 2010 Land use map of Mauritius. Reduit: Mauritius Sugar Industry
 Research Institute. 22 p.: 7 tbls, 1 fig., and 1 map (scale 1:100 000).
 (MSIRI Occasional Paper No. 41).

© MSIRI, 2011.



N
 ↑
 Approx.
 Scale 1: 350 000